

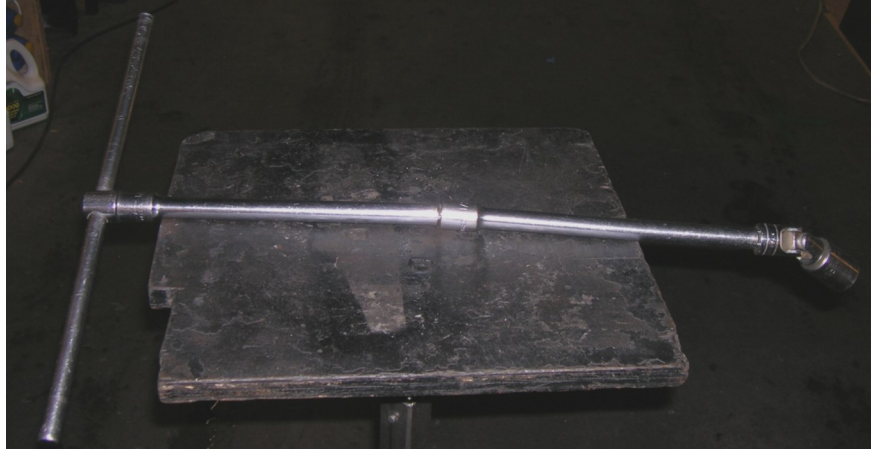
# INGRAM ENTERPRISES INC

FUEL INJECTION SPECIALISTS

15613 Peterson Road, Bldg C, Burlington, WA 98233

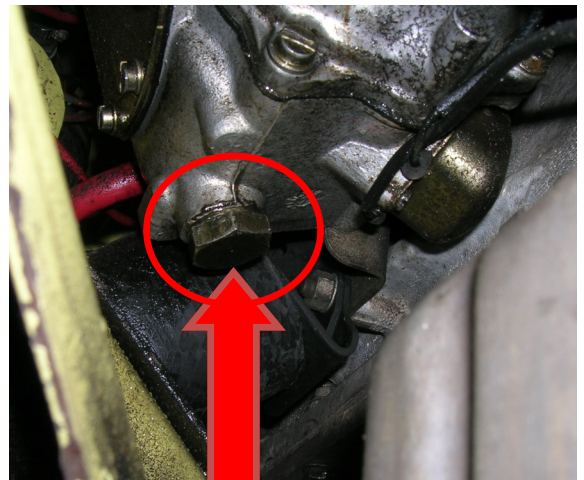
## How to test for "Gas in the oil" on 4C Spica Pumps

1) Use a long 1/2 drive extension with a "T" Handle, 1/2 drive universal adaptor and a 22 mm socket.



2) The Universal is needed since it is not a straight line to reach the 22 mm nut under the injection pump.

3) Crack loose the nut then carefully catch any liquid that drains from the pump into a small cup. Most of the oil will have already drained back into the engine, so don't expect more than a couple of ounces.



4) If the liquid is very thin and smells bad the pump needs servicing. If the liquid burns like a candle there is gas in the oil.



[Get your pump in the queue \(click here\)](#)